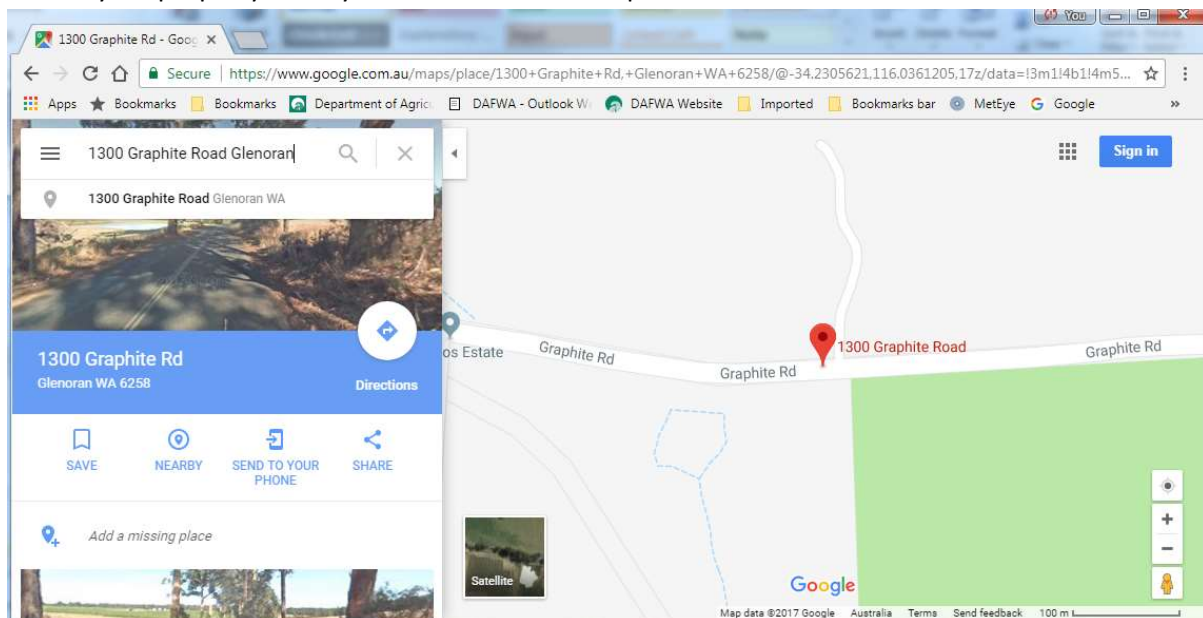


How to obtain GPS coordinates for preferred Supply Points from Google Maps

Type “maps.google.com.au” into your search engine or URL bar on your browser.

This will open google maps.

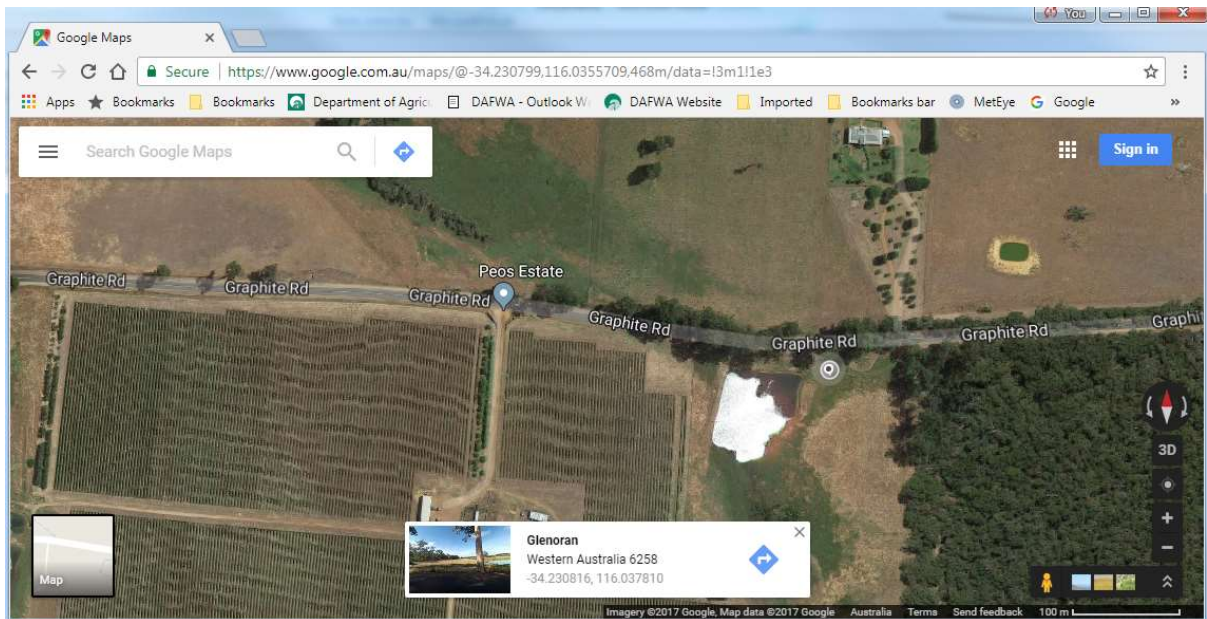
To find your property enter your address into the top left search box.



If you would like to see aerial photography click the Satellite icon in the bottom left of the map.

To obtain the GPS coordinates for your preferred Supply Point, you simply just need to click on the map where you want your Supply Point located. You may need to zoom in or out by using the + and – symbols in the bottom right or use the mouse to grab and drag the map to the area you want.

Once you have clicked on the map a small box will appear at the bottom of the browser. It may have a picture and should have a locality name. Underneath there are some numbers, these are latitudes and longitudes.



Please write the latitudes and longitudes exactly on your form exactly as they are displayed in Google Maps. If you have clicked the wrong spot you can just click on another and the new numbers will appear. If you find the numbers are too small to read if you click on them they will appear on the left in larger text.

